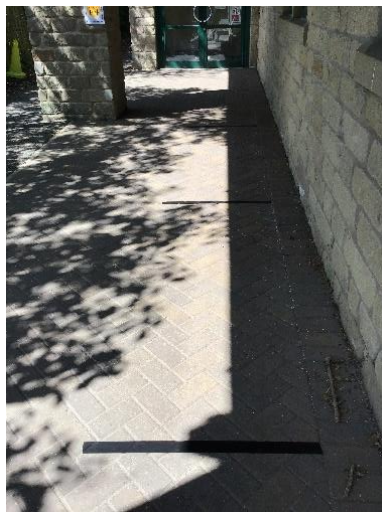
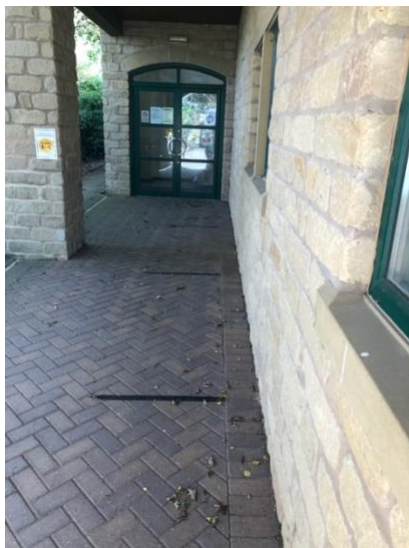


# Coming back to school



There are new signs outside school and black lines on the path to remind everyone to line up 2m apart so that I stay safe and healthy.



I will go into school using the side door. At the door I need to say goodbye to the adult that has come with me. They will not be allowed to come into school with me because school isn't big enough for all the adults to stay 2m apart.



The first thing I need to do is use the hand sanitiser to make sure that I have clean hands before I touch anything in school. Then I can hang my coat on my peg. I won't be bringing my indoor shoes to school at the moment.



The classroom looks a little bit different. I will be sat on a table with a friend. All the tables will be facing forward. I will be given my own pot of resources which will include my pen, pencils, ruler and rubber.



Any reading books that I have finished or work that I want Mr Gamble to look at need to go in the 'Drop off box' that will be on the step as you walk into the classroom.



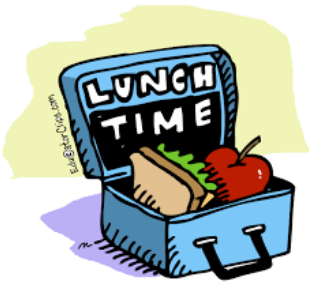
The toilet I will use is the one next to the staff room which used to be the staff toilet.



I can look at the visual timetable on the wall to see what we will be doing today, just like before.



I will have break times with all the friends in my class.



I will have lunch time, just like before, but it will be just my class who will be having either a packed lunch or school dinner in the hall.

Looking forward to seeing you all on Tuesday.

Mr Gamble